

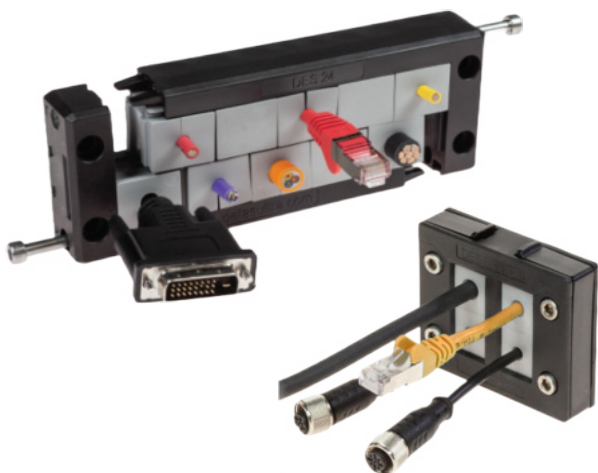
# AEROSUSA

## Cable Entry System Product Reference Brochure





# Entry System for Pre-Terminated Cables



## Split Frames

View all on our website!



**DES Split Frame:** Designed to accommodate small, multiple or large inserts for cables in the same frame. Future cable size changes can be easily accommodated. Thanks to the robust construction, the DES is a long lasting product.

**DES Click Frame:** Designed similarly to the DES Split frame, however, designed to be more economical. With an IP 54 level of protection, DES Click frames are ideal for cable management in general applications.

DES 24		DES L2		DES CLICK 24	
DES 16		DES L3		DES CLICK 16	
DES 10		DES L4		DES CLICK 10	
DES Q		DES L5		DES CLICK Q	



## Frame Inserts

View all on our website!



The inserts enable several cables from 2 to 34 mm in diameter to be installed in split frames and split cable glands.

Versions available for 1, 2 or 4 pre-terminated cables.

Non-Terminated cables can be installed using the same inserts or specially designed inserts for non-terminated cables.

**\*ALL INSERTS UL94-V0\***



## Frames With Brushes

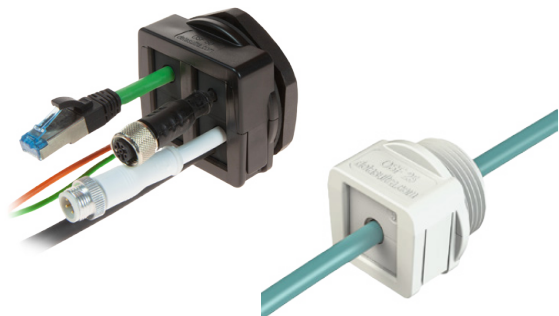
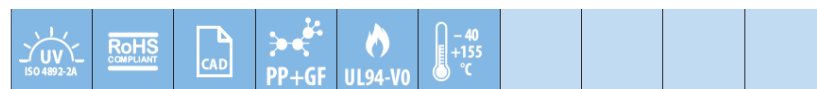
View all on our website!



The DES Z, single brush, and DES ZZ, double brush, split frames enable multiple cables and connector sizes to be passed through a panel wall.

The brushes provide effective protection against dust and debris.

Brushes available in split cable glands as well.



## Split Cable Glands

View all on our website!



Threaded cables glands with split designs to accommodate pre-terminated cables for M16 to M63 hole sizes.

Wide range of styles including IP66 level protection and IP54 protection. Also available with 90 degree entry.





# Entry System for Non-Terminated Cables



## Framless Cable Plates

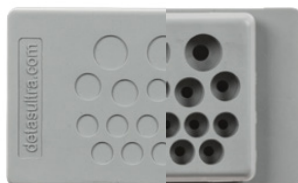
[View all on our website!](#)



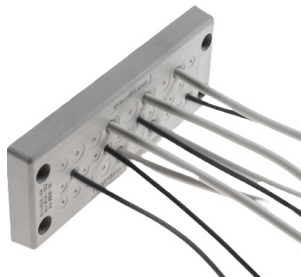
An innovative alternative to standard cable glands on electrical, electronic and telecommunication cabinets and equipment.

Cables are pushed through the front membrane, whilst the second membrane increases the strain relief and liquid resistance.

No tools required for install. Frame snaps into panel.



## Double Membrane



## Frammed Cable Plates

[View all on our website!](#)

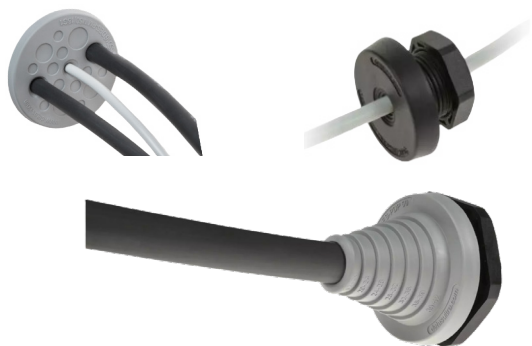


Cable plates with integrated frame for sturdier installation. Mounted to panels via four screw holes.

Accepting 7 to 124 cables depending on model.



## Double Membrane



## Circular Cable Plates

[View all on our website!](#)



Designed in the same style as the framed and frameless cable plates including the great double membrane, but requiring circular cutouts.

Circular cable plates fit M16 to M 63 holes.



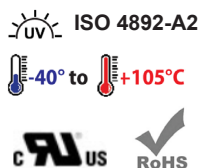
## Double Membrane



# Entry System for Pre-Terminated Cables

## Group 1 - Split Frame

Split frames to accommodate multiple inserts for a wide range of cables. Future modifications can be accomplished easily with minimal effort.



- NEMA Rating: Up to 4X
- UL Type 4X
- IP Rating: Up to IP66

## DES Frames



PN	Cut-Out (mm)	Color
1731010024	108 x 39	Black
1731010016	86 x 39	Black
1731010010	63 x 39	Black
1731010008	40 x 39	Black
1731010002	40 x 18	Black
1731010003	63 x 18	Black
1731010004	86 x 18	Black
1731010005	108 x 18	Black

## DES Click



PN	Cut-Out (mm)	Color
1731010324	112 x 36	Black
1731010316	86 x 36	Black
1731010310	63 x 36	Black
1731010308	36 x 36	Black

## DES ZZ



PN	Cut-Out (mm)	Color
1731060224	108 x 39	Black
1731060216	86 x 39	Black
1731060210	63 x 39	Black
1731060208	40 x 39	Black
1731060202	40 x 18	Black
1731060203	63 x 18	Black
1731060204	86 x 18	Black
1731060205	108 x 18	Black

## DES 380M



PN	Cut-Out (mm)	Color
1731010270	72 x 72	Black

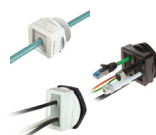
## DESCCLICK



PN	Thread	Color
1731051020	M20	Black
1731051025	M25	Black
1731051032	M32	Black
1731051350	M50	Black

\*Also available in grey

## OSF / OSF40\* / OSF50\*\*



PN	Thread	Color
1731052416	M16	Black
1731052420	M20	Black
1731052425	M25	Black
1731052432	M32	Black
1731052440*	M40	Black
1731052450**	M50	Black

\* Accepts 2 grommets / \*\* Accepts 4 grommets  
\*\*\* Also available in grey

## OSF ZIP



PN	Thread	Color
1731052816	M16	Black
1731052820	M20	Black
1731052825	M25	Black
1731052832	M32	Black

\*Also available in grey

## DES PRED / 90\*



PN	Thread	Color
1731050025	M25	Black
1731050032	M32	Black
1731050063	M63	Black
1731050250*	M50	Black

## SPP / SPC\* Insert



PN	Ø Cable	#	Color
1731020100	Blind	0	Grey
1731020102	2-3	1	Grey
1731020103	3-4	1	Grey
1731020104	4-5	1	Grey
1731020105	5-6	1	Grey
1731020106	6-7	1	Grey
1731020107	7-8	1	Grey
1731020108	8-9	1	Grey
1731020109	9-10	1	Grey
1731020110	10-11	1	Grey
1731020111	11-12	1	Grey
1731020112	12-13	1	Grey
1731020113	13-14	1	Grey
1731020114	14-15	1	Grey
1731020115	15-16	1	Grey
1731020116	16-17	1	Grey
1731020304	2	2	Grey
1731020306	3	2	Grey
1731020308	4	2	Grey
1731020310	5	2	Grey
1731020312	6	2	Grey
1731020314	7	2	Grey
1731020316	8	2	Grey
1731020318	2	4	Grey
1731020320	3	4	Grey
1731020322	4	4	Grey
1731020324	5	4	Grey
1731020326	6	4	Grey
1731052502*	2-3	1	Grey
1731052503*	3-4	1	Grey
1731052504*	4-5	1	Grey
1731052505*	5-6	1	Grey
1731052506*	6-7	1	Grey
1731052507*	7-8	1	Grey
1731052508*	8-9	1	Grey
1731052509*	9-10	1	Grey
1731052510*	10-11	1	Grey
1731052511*	11-12	1	Grey
1731052512*	12-13	1	Grey
1731052513*	13-14	1	Grey
1731052514*	14-15	1	Grey
1731052522*	2	2	Grey
1731052523*	3	2	Grey
1731052524*	4	2	Grey
1731052525*	5	2	Grey
1731052526*	6	2	Grey
1731052527*	7	2	Grey
1731052532*	2	4	Grey
1731052533*	3	4	Grey
1731052534*	4	4	Grey
1731052535*	5	4	Grey
1731052536*	6	4	Grey

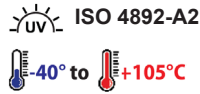
\* SPC Grommets for OFC / \*\* Also available in black

Consult our website [aerosusa.com](http://aerosusa.com) for full product details and specifications

# Entry System for Non-Terminated Cables

## Group 2 - Double Membrane

Cable is inserted through the front membrane, a second membrane improves the strain relief and liquid resistance.



- NEMA Rating: Up to 4X
- UL Type 4X
- IP Rating: Up to IP66

## SPG Insert



for larger pre-terminated cables

PN	Ø Cable	Color
1731022000	Blind	Grey
1731022117	17	Grey
1731022118	18	Grey
1731022119	19	Grey
1731022120	20	Grey
1731022121	21	Grey
1731022122	22	Grey
1731022123	23	Grey
1731022124	24	Grey
1731022125	25	Grey
1731022126	26	Grey
1731022127	27	Grey
1731022128	28	Grey
1731022129	29	Grey
1731022130	30	Grey
1731022131	31	Grey
1731022132	32	Grey
1731022133	33	Grey
1731022134	34	Grey

\*Also available in black

## SPP K INSERT



for non-terminated cables

PN	Ø Cable	Color
1731021100	Blind	Grey
1731021110	2.5 - 7	Grey
1731021115	5 - 10	Grey
1731021120	7.5 - 11.5	Grey
1731021125	10 - 14	Grey

\*Also available in black

## SPG Specialty



PN	Application
1731020933	RJ45 Cat.6
1731020910	USB-B
1731020915	USB-C
1731020920	USB-Mini
1731020925	USB-Micro
1731020940	2 x USB 2.0
1731020905	USB 3.0
1731020935	HDMI

## DES-PM 24



without frame

PN	Cut-Out	Cables	Color
1732052412	112 x 36	12	Grey
1732052414	112 x 36	14	Grey
1732052417	112 x 36	17	Grey
1732052418	112 x 36	18	Grey
1732052420	112 x 36	20	Grey
1732052426	112 x 36	26	Grey
1732052442	112 x 36	42	Grey
1732052448	112 x 36	48	Grey
1732052450	112 x 36	50	Grey

\*Also available in black

## DES-PDM 24



with internal frame

PN	Cut-Out	Cables	Color
1732012414	112 x 36	14	Grey
1732012415	112 x 36	15	Grey
1732012416	112 x 36	16	Grey
1732012417	112 x 36	17	Grey
1732012425	112 x 36	25	Grey
1732012432	112 x 36	32	Grey
1732012442	112 x 36	42	Grey

\*Also available in black

## DES-PDM 24 CLEAN



with internal frame

PN	Cut-Out	Cables	Color
1732025017	112 x 36	17	Blue

## DES-PDM S



with internal frame

PN	Cut-Out	Cables	Color
1732021127	112 x 36	7	Grey

\*Also available in black

## DES-PM S



without frame

PN	Cut-Out	Cables	Color
1732074607	46 x 18	7	Grey
1732074609	46 x 18	9	Grey
1732078611	85 x 18	11	Grey
1732078617	85 x 18	17	Grey
1732071221	112 x 18	21	Grey

\*Also available in black

## DES-PM M



without frame

PN	Cut-Out	Cables	Color
1732062504	25.5	4	Grey
1732062506	25.5	6	Grey
1732063210	32.5	10	Grey
1732064016	40.5	16	Grey
1732065009	50.5	9	Grey
1732065011	50.5	11	Grey
1732065012	50.5	12	Grey
1732065015	50.5	15	Grey
1732065017	50.5	17	Grey
1732065020	50.5	20	Grey

\*Also available in black

## DES-PDM M



with internal frame & locknut

PN	Thread	Cables	Color
1732033204	M32	4	Grey
1732033242	M32	4	Grey
1732033207	M32	7	Grey
1732034008	M40	8	Grey
1732035008	M50	8	Grey
1732035010	M50	10	Grey
1732035012	M50	12	Grey
1732035019	M50	19	Grey
1732036309	M63	9	Grey
1732036313	M63	13	Grey
1732036314	M63	14	Grey
1732036335	M63	35	Grey

\*Also available in black

## DES-PDP



with internal frame & locknut

PN	Thread	Ø Cable	Color
1732050025	M25	2.5 - 17	Grey
1732050032	M32	5 - 23	Grey
1732050040	M40	8 - 29	Grey
1732050050	M50	17 - 42	Grey
1732050063	M63	23 - 55	Grey

\*Also available in black

## DES-PDM Q

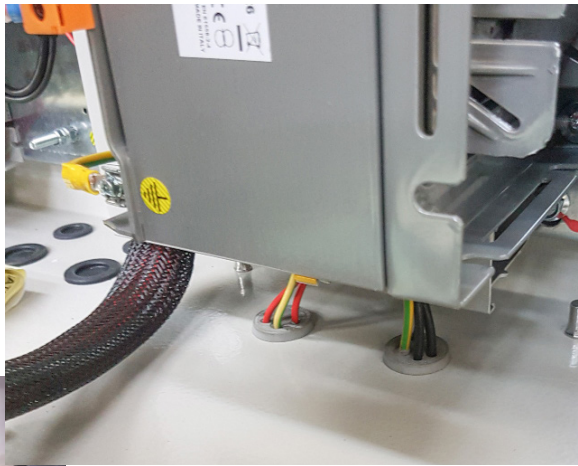


with internal frame

PN	Cut-Out	Cables	Color
1732014613	46 x 46	13	Grey
1732014617	46 x 46	17	Grey
1732014625	46 x 46	25	Grey

\*Also available in black

Consult our website [aerosusa.com](http://aerosusa.com) for full product details and specifications



### Check Out Our Other Products!

EMC



Strain Relief



Conduit

