



ROHRflex® PA 6 - UL - SD

LFNC-C
Liquid-tight, Flexible, NonMetallic Conduit
Corrugated**Fittings:**
RQG-N / RQG-M
RQW-N / RQW-M
RQB45-N / RQB45-M

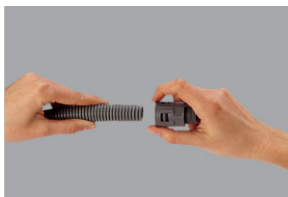
For installation in accordance with Article 356 of ANSI / NFPA 70, "National Electrical Code" (NEC).

This product may also be used for installation of conductors for electrical signs and outline lighting in accordance with NEC.

Standard for products in this category for conduit is ANSI / UL1660 and for fittings UL 514B.

FLEXAquick® System Advantage

- Quick Connect & Disconnect
- No Special Tools Required
- No Additional Parts Required
- Total System Integration
- 3 Second termination
- IP 68 / 69K



Insert conduit entirely into fitting
Fitting will only turn with force
For IP 68 / 69K



Remove by grabbing collar
Pull
No additional tools required



Fitting is ready for use again
IP 68 / 69K



"Unsurpassed in Cable Protection and Strain Relief"

ROHRflex® PA 6 - UL - SD



Material: Plastic (PA6)

Color: Black

Construction

Corrugated all-plastic tubing, internally and externally corrugated

Temperature Range

-25°C up to +120°C

Properties

- Air and liquid tight
- Oil resistance up to 80°C
- Benzine resistant
- Widely resistant to acids and solvents
- Free of silicone, cadmium & hydrogen
- Highly self extinguishing
- Flame retardant
- Outdoor Rated / UV-resistant
- UL 1660 | CSA C22.2 Nr. 227.2.1-14



Fine Profile						
Part #	OD	mm	stat	dyn	m / ft	
0238.202.016	1/2"	21,2	16,0 x 21,2	50	75	50 / 164
0238.202.023	3/4"	28,5	22,5 x 28,5	60	100	50 / 164
0238.202.029	1"	34,5	28,4 x 34,5	70	120	25 / 82
0238.202.036	1 1/4"	42,5	35,5 x 42,5	100	150	25 / 82
0238.202.048	1 1/2"	54,5	47,5 x 54,5	110	190	25 / 82

RQG - N



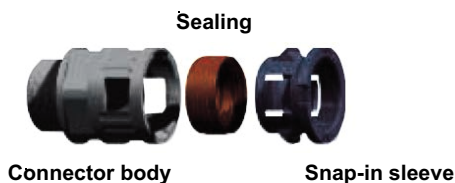
Material: Body - Plastic (PA6)
Seal - TPE

Construction

Connector case with hexagonal wrench surface, fixed outer thread, integrated snap-in sleeve and sealing

Temperature Range

-40°C up to +120°C



Properties

- One piece connector with push-in lock for coarse and fine profile conduits
- Simple dismounting by displacing the snap-in sleeve
- Free of silicone, cadmium & hydrogen
- Self-extinguishing
- Fit for high mechanical stress
- Impact-resistant
- UL514B, CSA C22.2 No. 18.3-12






IP 68 / 69K		UL LISTED (CONDUIT FITTING) E140	OD							
Part #	Ø	Nm	Ø I mm	Ø B mm	C mm	D mm	SW mm	St. Pcs.		
5020.056.206	UL 21,2 1/2"	2,5	15,5	29,5	13,0	44,5	27	50		
5020.038.221	UL 28,5 3/4"	6,0	20,7	37,0	14,0	47,5	34	25		
5020.038.227	UL 34,5 1"	9,0	25,7	44,0	16,0	52,0	40	25		
5020.056.207	UL 42,5 1 1/4"	9,0	34,0	52,0	18,0	47,5	49	25		
5020.056.209	UL 54,5 1 1/2"	9,0	39,5	64,0	18,0	57,0	60	10		
5020.056.210	UL 54,5 2"	12,0	48,5	64,0	21,0	60,0	60	10		



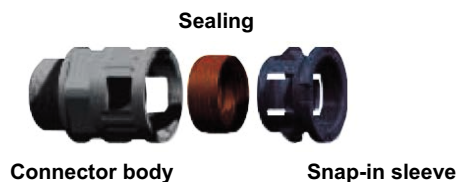
"Unsurpassed in Cable Protection and Strain Relief"

RQW - M



<div><div><div><div><div><div></div><div>UL</div><div>US</div></div><div><div></div><div></div><div></div></div><div><div></div><div></div><div></div></div></div><div><div>IP 68 / 69K</div><div>LISTED</div><div>(CONDUIT FITTING)</div><div>9140</div></div></div><div>OD</div><div></div><div></div><div></div></div></div>				Part #	Ø	Nm	Ø I mm	Ø B mm	C mm	E mm	F mm	Ø D mm	St. Pcs.
5020.064.220	UL	21.2	M 20 x 1.5	5	14,8	29,5	13,0	50,0	49,0	27,0	50		
5020.036.225	UL	21.2	M 25 x 1.5	6	18,0	29,5	13,0	50,0	49,0	29,5	50		
5020.064.225	UL	28.5	M 25 x 1.5	6	18,0	37,0	13,0	57,0	57,0	34,0	25		
5020.036.232	UL	28.5	M 32 x 1.5	10	24,0	37,0	15,0	57,0	59,0	37,0	25		
5020.064.232	UL	34.5	M 32 x 1.5	10	24,0	44,0	15,0	67,5	65,0	43,0	10		
5020.036.240	UL	34.5	M 40 x 1.5	12	32,0	44,0	15,0	67,5	67,0	45,0	10		
5020.064.240	UL	42.5	M 40 x 1.5	12	32,0	52,0	15,0	83,0	72,0	51,5	10		
5020.036.250	UL	42,5	M 50 x 1.5	15	39,0	52,0	15,5	83,0	74,5	55,0	10		
5020.064.250	UL	54,5	M 50 x 1.5	15	39,0	64,0	15,0	94,0	84,0	64,0	5		
5020.036.263	UL	54.5	M 63 x 1.5	18	53,0	64,0	16,0	94,0	85,5	68,0	5		

RQB45 - N



Material: Body - Plastic (PA6)
Seal - TPE

Construction

Connector case with hexagonal wrench surface, fixed outer thread, integrated snap-in sleeve and sealing





Temperature Range

-40°C up to +120°C

Properties

- One piece connector with push-in lock for coarse and fine profile conduits
- Simple dismounting by displacing the snap-in sleeve
- Free of silicone, cadmium & hydrogen
- Self-extinguishing
- Fit for high mechanical stress
- Impact-resistant
- UL514B, CSA C22.2 No. 18.3-12



<div><div><div><div><div>IP 68 / 69K</div></div><div>OD</div><div></div><div></div><div></div></div></div></div>											
Part #		Ø		Nm	Ø I mm	Ø B mm	C mm	E mm	F mm	SW mm	St. Pcs.
5020.017.206	UL	21,2	1/2"	2,5	14,5	29,5	12,0	55,0	60,0	26	50
5020.017.214	UL	28,5	3/4"	6,0	20,0	37,0	13,0	67,0	70,0	32	25
5020.017.216	UL	34,5	1"	9,0	25,0	44,0	14,0	73,5	75,0	39	10
5020.017.217	UL	42,5	1 1/4"	9,0	39,0	52,0	17,0	82,5	100,0	48	10
5020.017.209	UL	54,5	1 1/2"	9,0	37,5	64,0	17,0	97,0	100,0	59	5
5020.017.210	UL	54,5	2"	12,0	45,5	64,0	17,0	97,0	100,0	70	5



"Unsurpassed in Cable Protection and Strain Relief"

