

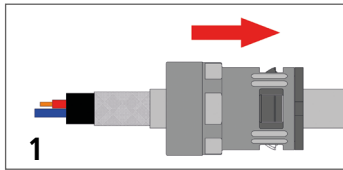
ASSEMBLY INSTRUCTIONS

IP 66 ... IP 68 | IP 69K

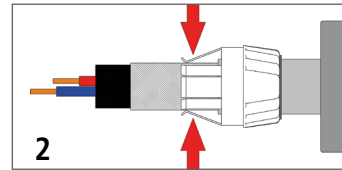


EMC connector with through-hole contact (contacting spring)

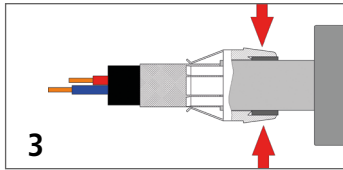
Note: Cut the end of the tubing straight and mask the end of the shielding braid in order to facilitate the mounting.



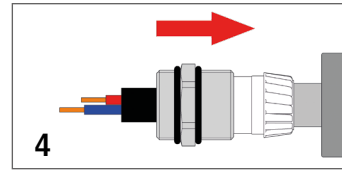
Place the connector housing over the stripped cable.



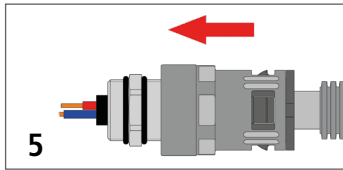
Slide the blade housing onto the sheathing surface and the contact spring onto the stripped braiding of the cable.



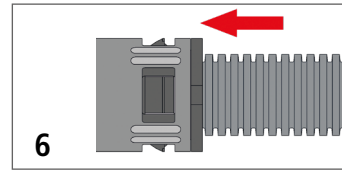
The slat insert now sits on the cable sheath.



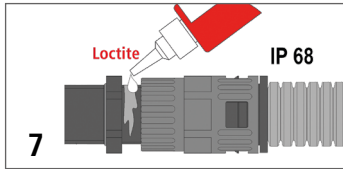
Mount the cable gland and tighten it key-tight.



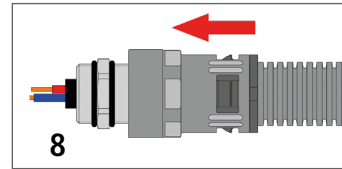
Push the corrugated tubing into the connector housing until stop.



The connector housing is professionally connected to the corrugated tubing.



To ensure a protection IP 68 it is necessary to use **Loctite 577** and **Loctite 243** for metal | metal connections.



Now the EMC connector is mounted and ready for further assembly into devices or plugs.

Product liability will be ineffective when products are combined with or applied together with other products. All documentation, illustrations, and charts published are subject to copyright and must not be copied, changed, used, or modified without prior approval in writing by us. We will not be held liable for typographical or other errors and incorrect drawings. Technical modifications are subject to change without prior notice.